

TERRAZZO



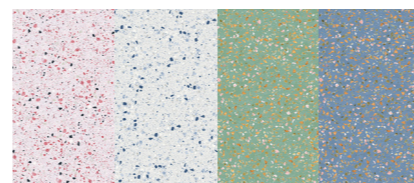
FLORA TERRAZZO

AWE

FLORA TERRAZZO

WE

เทอร์ราซโซลดลายดอกกุหลาบ สีสันธรรมชาติ
ส่งเสริมบรรยากาศแห่งความผ่อนคลาย



Flora Terrazzo Pink

ME-TZ6 12009M

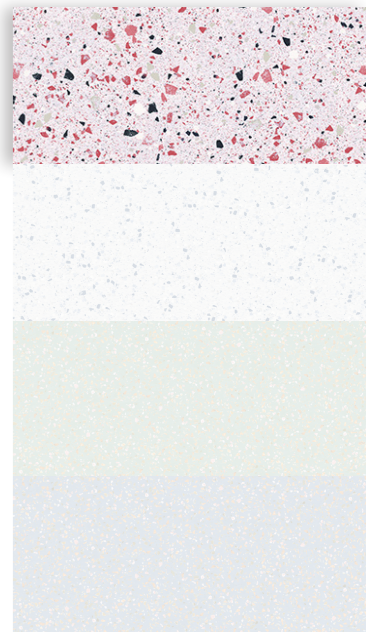
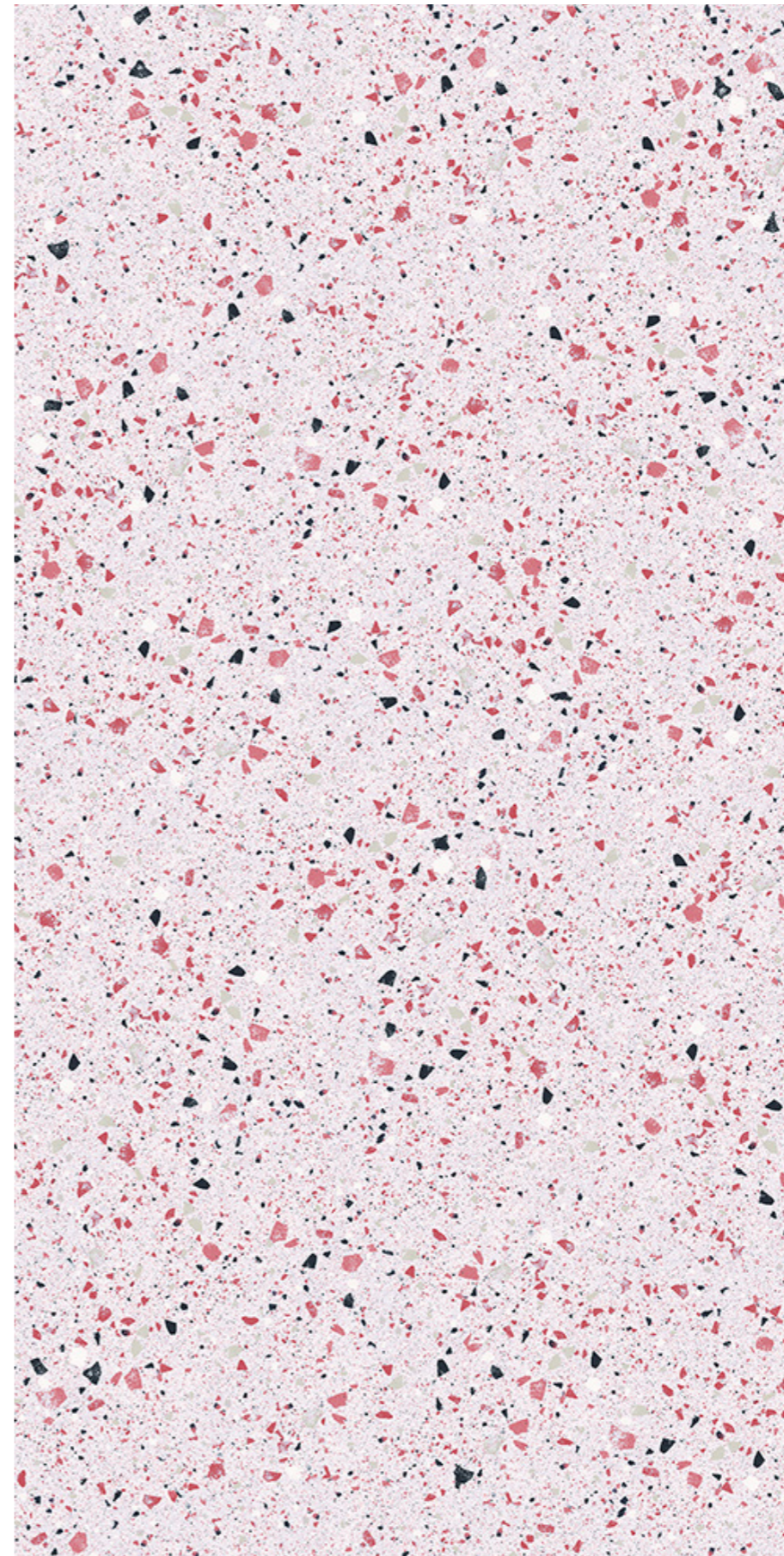
terrazzo

60x120
cm

4 Patterns

Matte

THICKNESS
10 mm



AVE

Flora Terrazzo Light Blue

ME-TZ612010M

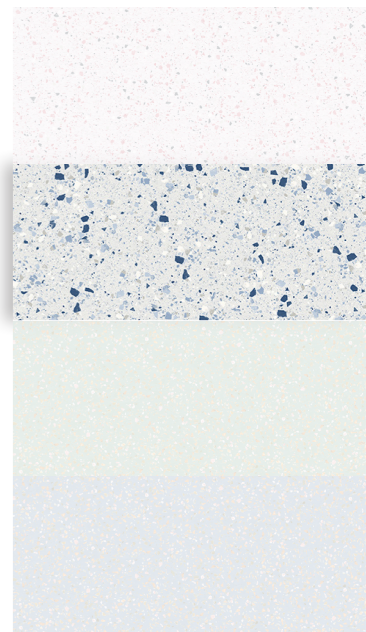
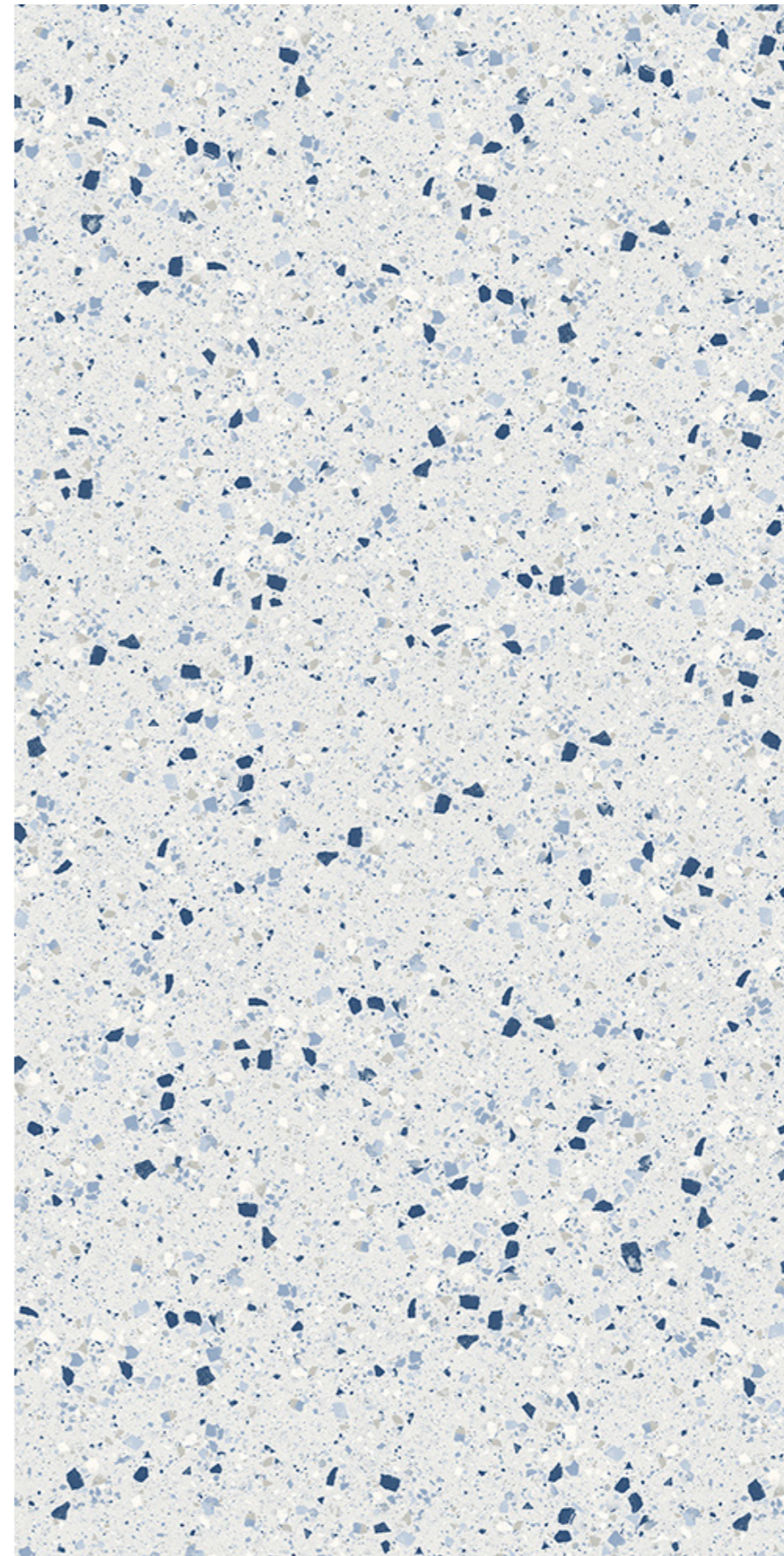
terrazzo

60x120
cm

4 Patterns

Matte

THICKNESS
10 mm



AVE

Flora Terrazzo Green

ME-TZ612011M

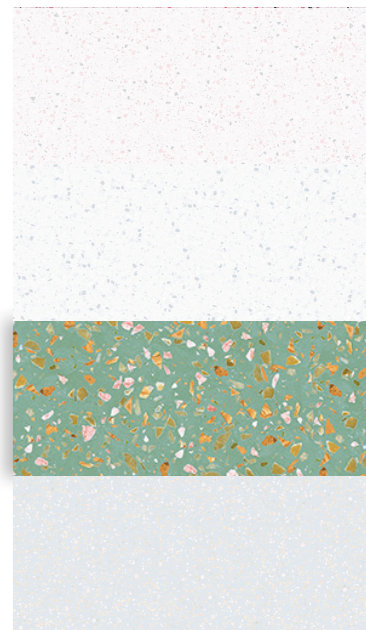
terrazzo

60x120
cm

4 Patterns

Matte

THICKNESS
10 mm



ME

Flora Terrazzo Blue

ME-TZ612012M

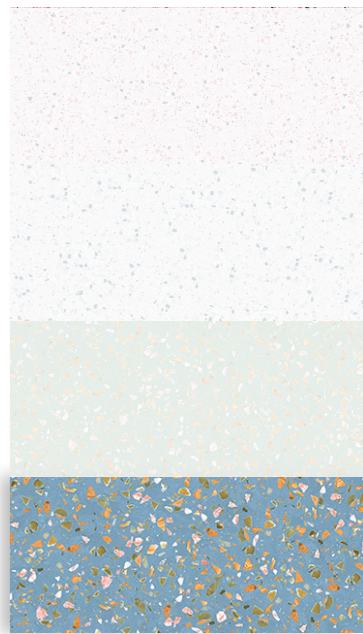
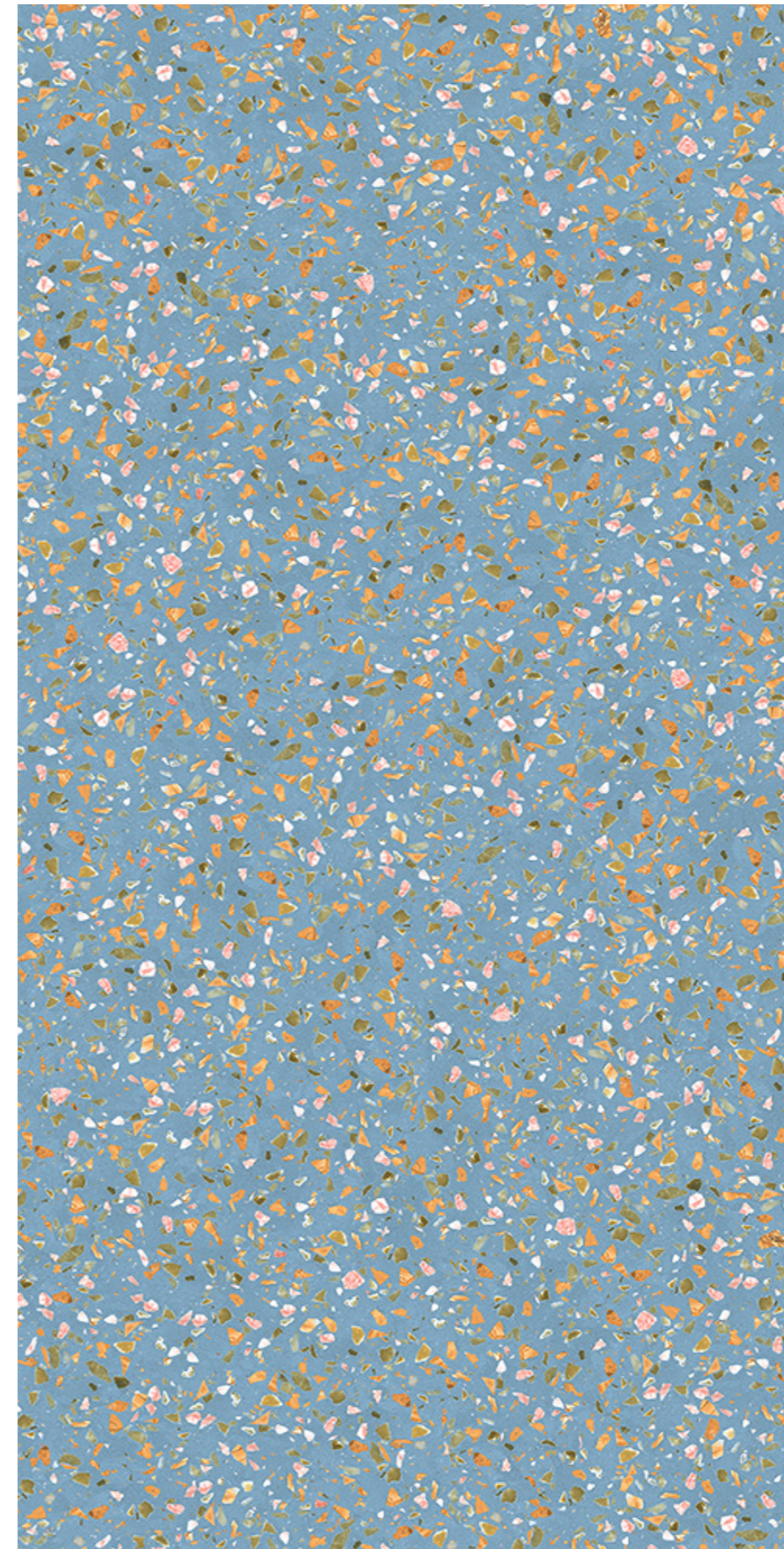
terrazzo

60x120
cm

4 Patterns

Matte

THICKNESS
10 mm





ME

SPECIFICATION

| TECHNICAL FEATURES | STANDARDS | INTERNATIONAL STANDARDS | ME TYPICAL STANDARDS |
|---|-------------------|--------------------------|--|
| DIMENSIONAL CHARACTERISTIC | | | |
| Length and width | ISO 10545-2/2018 | ±0.60% max ±2.0 mm | ±0.5% max ±2.0 mm |
| Thickness | ISO 10545-2/2018 | ±5.00% max ±0.5 mm | ±5.00% max ±0.5 mm |
| Straightness of sides | ISO 10545-2/2018 | ±0.50% max ±1.5 mm | ±0.25% max ±1.5 mm |
| Rectangularity | ISO 10545-2/2018 | ±0.50% max ±2.0 mm | ±0.30% max ±2.0 mm |
| Surface flatness | ISO 10545-2/2018 | ±0.50% max ±2.0 mm | ±0.25% max ±2.0 mm |
| CHEMICAL PROPERTIES | | | |
| Resistance to household chemicals & swimming pool salts | ISO 10545-13/2016 | min Class B | A |
| Resistance to staining | ISO 10545-13/2016 | min Class B | A |
| PHYSICAL PROPERTIES | | | |
| Water absorption | ISO 10545-3/2018 | Group B1a, E ≤0.5% | ≤0.5% |
| Breaking strength | ISO 10545-4/2019 | min 1300 N | 1300 N |
| Modulus of rupture | ISO 10545-4/2019 | min 35 N/mm ² | >35 N/mm ² (depending on series) |
| Resistance to surface abrasion | ISO 10545-4/2019 | Report abrasion class | Glazed: Class 2-4 (depending on glaze type) |
| Resistance to deep abrasion | ISO 10545-4/2019 | max 175 mm ³ | Unglazed : max 150 mm ³ |

PACKING DETAILS Glazed Porcelain

| SIZE (cm) | THICKNESS (mm) | PER CARTON  | | | PER PALLET  | | |
|--------------|-------------------|--|------|-------------|--|-------|---|
| | | PIECES | SQ-M | WEIGHT (kg) | CARTON | SQ-M | WEIGHT (kg) (including empty pallet) |
| 60x120 | 10.0 | 2 | 1.44 | 35 | 30 | 43.20 | 1,050 |

